

EXECUTIVE *bound*



THE WOMEN'S FEARLESS LEADERSHIP MASTERMIND

A dynamic leadership program supporting talented female leaders to unlock their full potential, advance, and drive success in only six months.

with
DR. GINNY BARO

HOW IS YOUR COMPANY DEVELOPING FEMALE LEADERS?

And helping them lead, engage, and influence their teams, advance, and grow into senior leadership roles.

IS YOUR ORGANIZATION SEARCHING FOR

A proven leadership training solution that delivers tangible results, a high ROI, and scalability?

AS A FEMALE LEADER

How can you develop confidence, elevate your personal brand, create a strong network of allies, overcome imposter syndrome, and navigate challenges to reach your full leadership potential?

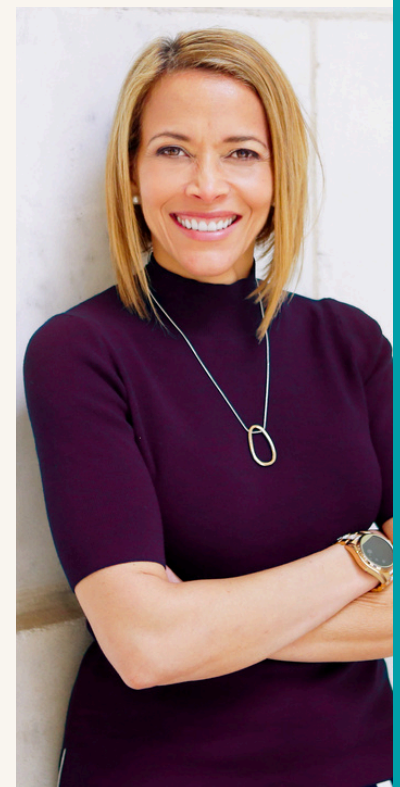
THE WOMEN'S FEARLESS LEADERSHIP MASTERMIND

IS A PROVEN SOLUTION FOR FEMALE LEADERS



ABOUT DR. GINNY

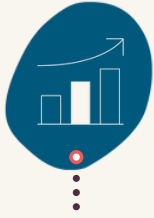
Dr. Ginny A. Baro immigrated to the U.S. at age 14 with nothing more than a dream. Today, she's a highly sought-after speaker, leadership coach, career strategist, and the CEO of Fearless Women at Work and ExecutiveBound. She specializes in developing leaders and helping female leaders advance within Fortune 500 companies, financial services, STEM fields, and other challenging careers. A #1 bestselling author of *Fearless Women at Work* and *Healing Leadership*, she launched the Women's Fearless Leadership Mastermind in 2020. Since 2021, she has partnered with McKinsey & Company's Hispanic/Latino Executive Program. Her expertise and commitment make her an invaluable resource to any organization aiming to unlock its talent's potential and achieve success. To learn more, please visit www.ExecutiveBound.com.



**LET'S CONNECT AND DISCUSS
YOUR SPECIFIC NEEDS AND GOALS.**



LET'S STRATEGIZE



BUSINESS GROWTH



HIGH-PERFORMING TEAMS



WELL-BEING AT WORK

WHY IT WORKS

Develop invaluable leadership skills over six months with bi-weekly mastermind sessions and comprehensive coaching. Gain access to extensive tools and a year-long support system for sustained progress and influence.

Six Months of Development: Engage in bi-weekly mastermind sessions and on-demand training modules designed to build confidence and enhance self-leadership and influence.

Results-Focused Coaching: Benefit from both private and group coaching sessions, plus continuous support within an empowering, private LinkedIn community of peers and your executive coach.

Extensive Resources: Access 30+ tools and bonuses to support your leadership journey and empower you to lead, engage, and influence effectively and fearlessly.



TRAINING

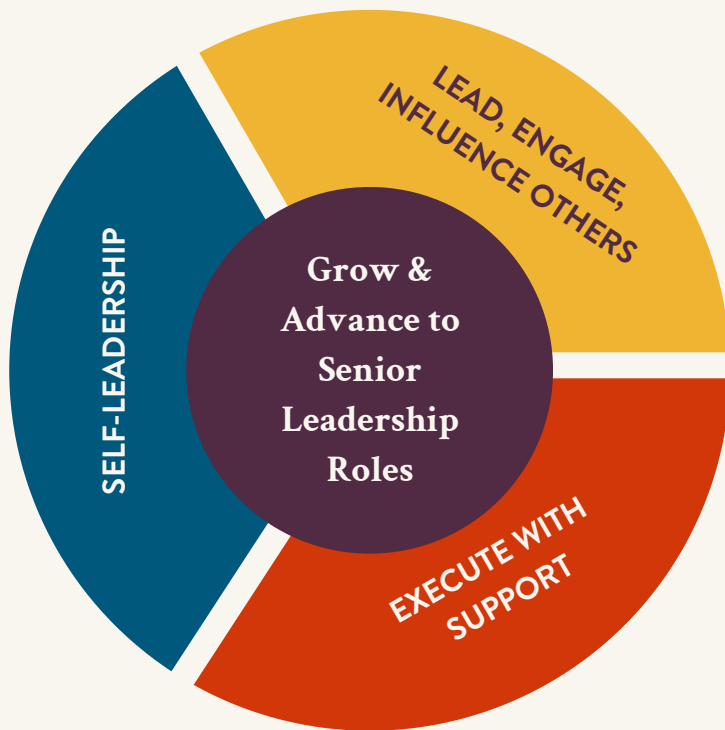
- Online Training Modules
- Assessments
- Personalized Tools

COACHING

- Private Coaching
- Group Coaching
- Masterminds

SUPPORT

- Peer Community
- Support Structure
- Accountability



- Cultivate a growth mindset, self-awareness, self-confidence, mindfulness, resilience
- Build a personal brand, relationships with centers of influence, mentors and sponsors
- Self-manage beliefs, fears and stories

- Articulate a strategic vision
- Coach and mentor high-performing teams
- Influence collaboration, feedback, and an inclusive environment

- Create a dynamic roadmap to reverse-engineer your compelling leadership vision
- Leverage support from peers and a certified executive coach
- Practice self-care regularly

WHAT OUR TALENTED MEMBERS RECEIVE

- * 12, 1-Hour, Live Masterminds via Zoom Every 2 Weeks for the First Six Months (over \$10,000 value)
- * 14.5 Hours of 7 Self-Paced Leadership Training Modules Accessible 24/7 (over \$10,000 value)
- * 4, 1-Hour Private VIP Coaching Sessions (over \$3,000 value)
- * A Downloadable Workbook, Tools & Assessments (over \$2,000 value)
- * On-Demand Support, M-F, 9 - 5 PM ET, a Community of Peers (over \$3,000 value)
- * 6, 1-Hour Monthly Check-Ins, Group Coaching after 6 Months (over \$5,000 value)
- * Online Training Progress Reports, Assessments, Certificate of Achievement
- * Your journey is fully supported, and your investment is risk-free with a 100% Satisfaction Guarantee!
- * BONUS – 3 VIP Tickets to the Women’s Self-Care Retreat, Podcast Guest (over \$3,000 value)
- * BONUS – 100 Meals Donated through Feeding America and more!

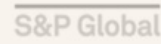
FEARLESS

LEADERSHIP MASTERMIND

“COMPANIES WITH MORE THAN 30% OF WOMEN EXECUTIVES WERE MORE LIKELY TO OUTPERFORM COMPANIES WHERE THIS PERCENTAGE RANGED FROM 10% TO 30%.”

“Diversity Wins,” McKinsey & Company, Featured Insights, 2020

A SAMPLE OF OUR CLIENTS & PARTNERS



MEMBERS' SUCCESS STORIES



KATHY MCKEON
SENIOR ACCOUNT EXECUTIVE

“The Fearless Leadership Mastermind program has been a personal and professional game-changer for me! Now I have more tools to continue to grow as a leader, to build mutually beneficial relationships, and take care of myself, my team, and the people I care about.”



MERCEDES TARLATI
DIRECTOR, HEAD OF STUDY DESIGN

“When I joined the program, I was a manager with ten people reporting to me in Argentina. I couldn't find the career opportunities I was looking for. Everything is changing as I'm moving to the U.S. for a Director position [within my company] with 19 people reporting to me. Making this investment in myself was absolutely worth it”.



TOM TYSZ
DIRECTOR, HUMAN RESOURCES

“When we started working with Ginny, we needed assistance with several managers who had challenges interacting and motivating their staff. Ginny built relationships and gained the trust of our employees. Her influence made an immediate and lasting impact on the way our leadership engaged with their teams.”

BOOK YOUR CALL TODAY

THE WOMEN'S FEARLESS LEADERSHIP MASTERMIND FAQ

1 HOW DO WE GET STARTED?

If we haven't yet, let's connect to identify your goals, challenges, and how to implement the Women's Fearless Leadership Mastermind to meet individual and your organization's objectives. Please [click here to access our calendar](#), scan the QR code, or email us directly.

2 HOW DO I KNOW THIS PROGRAM IS A GOOD FIT FOR OUR COMPANY??

Our leaders' demographic includes talented, high-potential, high-performing female leaders of all backgrounds in STEM fields, financial services, and Fortune 500 companies. Our program supports the leadership development goals of mid-level to senior-level female leaders and those in a C-suite track. The best fit includes leaders committed to engaging actively in group coaching and discussions, online leadership training modules, and workbook exercises and willing to share resources and contribute to their peers throughout the program. Everyone in the cohort of up to 10 leaders will be ready to do the same for each other and provide the support your female leaders need to make progress consistently.

3 WHAT IS THE TUITION INVESTMENT IN THE WOMEN'S FEARLESS LEADERSHIP MASTERMIND?

Our virtual program bundle offers over \$35,000 in value, but that is not what you will invest! Your leaders will benefit from a scalable group tuition investment based on how many leaders participate. Let's set up a brief call to explore your leaders' unique leadership development needs and goals. Please [click here to access our calendar](#), scan the QR code, or email info@executivebound.com directly.

4 HOW DO WE REGISTER OUR LEADERS AND SAVE OUR SEATS?

After connecting with Dr. Ginny Baro and understanding your objectives and training requirements, we will work with your designated contact to enroll your leaders in the program. Each new cohort hosts up to ten female leaders only to provide each member with the best training experience. Together, we'll review the logistics and set up to start ASAP. Throughout the process, you can always email us with specific questions at info@executivebound.com.

5 HOW LONG DOES THE PROGRAM RUN?

The Women's Fearless Leadership Mastermind includes two key timeframes: the first six months and the last six months. During the first six months, we meet 12 times every 2 weeks for one-hour mastermind sessions and provide group coaching, private coaching, and on-demand, mobile-friendly online leadership training on our secure learning portal. The last six months include one-hour monthly check-ins, including group coaching and accountability from all female peers in the cohort. This solution supports our members' development for 12 months in total. This approach ensures they have a soft landing as they experiment with new behavior patterns over time and practice the latest tools they've acquired. They develop the proper guardrails to handle setbacks and accelerate their growth. All members earn lifetime membership to our private ExecutiveBound community to stay on track with implementing short- and long-term goals.

6 HOW DO LEADERS JOIN THE 1-HOUR BI-WEEKLY, VIRTUAL LIVE TRAINING MASTERMIND CIRCLES AND MONTHLY CHECK-INS?

Every two weeks for the first six months, we meet virtually for one hour over Zoom (on the same day and time for each session) for 12 sessions (excluding U.S. holidays). Once your leaders register, they will receive a calendar invitation for the bi-weekly Mastermind Circles. Our weekly training prompt emails help them stay on track and engaged with the online leadership training. Before the end of the first six months, they'll receive an invitation to join the monthly Visionary Leaders Circle sessions, including one-hour check-ins and group coaching in a supportive, high-energy environment (on the same day and time each month).

7 WHEN DO MEMBERS RECEIVE THE TRAINING MATERIALS?

After registering, program members receive a welcome email with access to their private resources page on our website, Executivebound.com, providing instructions on how to join the members' only secure learning portal and private community. All training materials--personalized Workbook, learning modules, videos, transcripts, and community--are mobile-friendly and accessible on-demand, 24/7, from anywhere with internet connectivity.

8 WHAT WILL BE THE TIME COMMITMENT THROUGHOUT THE 12 MONTHS?

This program was designed with busy, high-performing female leaders in mind. We guide our members to plan and prioritize their leadership development effectively while considering all professional and personal obligations from day one. For the first six months, the commitment is approximately 30.5 hours, including 12 bi-weekly, one-hr Mastermind Circles, 4 hours of private VIP coaching, engaging with the 14.5 hours of on-demand leadership training modules, in addition to working on the tools and exercises, which vary from leader to leader. On average, leaders should expect to invest under one hour per week to work on the self-reflection tools—they set the pace. After the first six months, they'll commit one hour per month or 6 hours for monthly check-ins. They will have the option to seek additional support as needed--included in the investment.

9 WHAT IF A LEADER CAN'T MAKE A GROUP COACHING SESSION AND Q&A, WILL THERE BE A REPLAY?

We know our leaders may not be able to make every bi-weekly Mastermind Circle or monthly check-in. We anticipate that every member will strive to attend. However, cohort members can access replays from our private archives when they can't make it. In between sessions, they can submit questions to info@executivebound.com and receive the support they need to keep moving forward.

10 WHAT IF I STILL HAVE QUESTIONS ABOUT THE WOMEN'S FEARLESS LEADERSHIP MASTERMIND?

Please email us at info@executivebound.com, [click here to access our calendar](#), or scan the QR code to speak with Dr. Ginny Baro.

SCAN THE QR CODE

